

# CERTIFICATE OF LOCATION OF GOVERNMENT CORNER

NORTHEAST Corner of Section 25, Township 106, Range 42, 5TH P.M.

STATE OF MINNESOTA, County of MURRAY

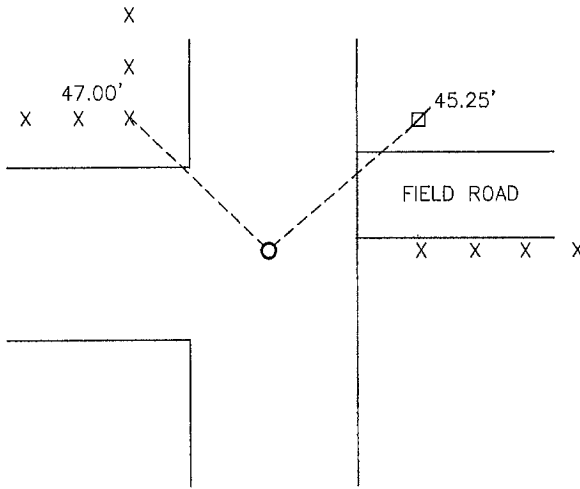
At the corner location shown on the sketch:

On 5/31/13 found a field stone over limestone  
DATE

left monument as found,  lowered monument,  removed monument (explain)

On 5/31/13 placed a 5/8" iron w/seal #43844  
DATE

### SKETCH OF REFERENCE TIES



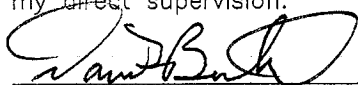
Minnesota State Plane Coordinate  
System Murray County Datum  
NAD83 (1996)

N: 142347.312  
E: 485005.544

Nail and seal in corner fence post NW 47.00'  
Nail and seal in utility pole NE 45.25'

Statement of evidence relative to this corner location is on back of page.

I hereby certify that this document and the data contained herein was prepared by me or under my direct supervision.

  
SIGNATURE

2/4/14  
DATE

Registration No. 43844

Land Surveyor,  Professional Engineer  
 County Surveyor,  County Engineer

OFFICE OF THE COUNTY RECORDER

County of \_\_\_\_\_

I hereby certify that this document was filed in the Co. Recorders office at \_\_\_\_\_ .M on the \_\_\_\_\_ day of FEB 5 2014 A.D. 20\_\_\_\_

County Recorder James V. Johnson  
By \_\_\_\_\_, Deputy

DOCUMENT NO. \_\_\_\_\_

## Statement of Evidence

In 1861, J.W. Myers did the original survey of the east line of the township.

On November 13, 1901, J.W. Woolstencroft, Murray County Surveyor, recorded a 12x12x14 limestone at the corner.

No Date, No Name, a stone was set over limestone.

On May 31, 2013, Bueltel-Moseng Land Surveying found a unrecorded 5/8" iron. We removed the 5/8" iron and dug with a backhoe. We found a field stone over a limestone 2.5'± below the road surface. We set a 5/8" iron with seal #43844 over found limestone.